



SDOC Reopening Plans

August 10, 2020



Overview

1. Overview of Plans
2. Health and Safety Priorities and Measures
3. Schedules
4. Parent Surveys
5. Virtual Option
6. Social and Emotional Wellbeing and Reintegration
7. Phases
8. Other

Core Principles

- We believe that the health, safety, and wellbeing of students and staff are foundational to learning and schooling.
- We believe that in-person education is critical to the academic, intellectual, social, and emotional development of children.
- We believe in providing balance and flexibility in achieving the above during the current pandemic.

SDOC Plans for In-Person Instruction

Plan A

- School is open to all students.
- 2-hour early dismissal schedule.
- No lunch.
- Virtual option available to all students.

Plan B

- Parallel to Plan A, except:
- School is open to 50% of the student body each day (last name A-K/L-Z)
- Students log in from home and participate in class via Google Meet.

SDOC Plans for In-Person Instruction

Plan B

- All students with an I.E.P. shall have the option of attending school every day.
- All E.L.L. students shall have the option of attending school every day.

Plans for 2020/2021 School Year (as of 8/10)

- PK - 5 students will return to school under Plan A.
- Students in grades 6 - 12 will return to school under Plan B.

Health and Safety Guidelines

- New Jersey Department of Education Guidance
- Center for Disease Control Guidance
- American Academy of Pediatrics Guidance
- World Health Organization Guidance
- National Academies of Science, Engineering, and Medicine White Paper

Health and Safety Priorities

Three Populations in Our School Buildings

- Students under the age of 10
 - May be less involved in transmission of Covid-19 than other age groups. ([CDC](#))
- Students ages 10 - 19
 - May be as involved in transmission of Covid as adults, but continue to experience less disease overall. ([CDC](#), [NJDOH](#))
- Adults
 - Most at risk for serious disease from Covid-19. ([CDC](#), [NJDOH](#))

Health and Safety Priorities, continued

Staff in SDOC

- 165 staff members aged 50 - 59 (27% of staff)
- 67 staff members aged 60+ (11% of staff)
- Numerous staff with underlying health conditions recognized as increasing vulnerability to COVID-19

Health and Safety Guidelines: Physical Distancing

NJDOE The Road Back:

- “School districts must allow for social distancing to the maximum extent possible.”
- “Schools must comply with Center for Disease Control, state, and local guidelines.”

CDC:

- Maintain physical distancing of “at least 6 feet when feasible.”
- When 6 feet is not attainable, other measures must be employed (face coverings, seats facing same direction, physical barriers).

Health and Safety Guidelines: Physical Distancing

PK - 5

- Grade Level Range, # of Students
 - 181 - 301
- Grade Level Average
 - 257
- Total # of Students
 - 1,587
- # of Students per Building
 - **397**

6 - 12

- Grade Level Range, # of Students
 - 306 - 363
- Grade Level Average
 - 335
- Total # of Students
 - 2,343
- # of Students per Building
 - **1,172**

Health and Safety Guidelines: Face Coverings

NJDOE The Road Back

- **Students are required to wear face coverings at all times (updated August).**

CDC Guidance:

- All persons over the age of 2 should wear face coverings in public settings, including schools.

Health and Safety Measures: SDOC

- Physical distancing to the extent practicable, striving for 6 feet
- Face coverings at all times
- Face shields--optional for students and staff
- Desk shields--for students opting not to wear face shields
- Rearrangement of furniture
- Modifications to school entry, transition time, school exit
- **Cohorting of students at the PK-5 level**
- Hand sanitizing/hand washing opportunities
- Reduction or elimination of practice of sharing materials

Health and Safety Measures: SDOC, cont'd

- Sanitization

- All classrooms will be sanitized daily with solutions approved by the EPA and that kill COVID-19.
- All school buses will be sanitized daily with solutions approved by the EPA and that kill COVID-19.
- Other areas, such as bathrooms and offices, will be sanitized at least daily and as frequently as possible with solutions approved by the EPA and that kill COVID-19.
- Custodial staff will sanitize high-touch surfaces as frequently as practicable during the course of the school day.

Health and Safety Measures SDOC, cont'd

- Parents will need to complete a form in the Genesis Parent Portal PRIOR TO SCHOOL each day to verify their child is free of COVID-19 symptoms.
- Attendance will be taken each day to confirm this has happened.
- Students will be removed and isolated if the health form has not been completed.

Pre-K Schedule

- Pre-K student with an IEP requiring a half-day program:
 - 8:40 am - 11:00 am
 - 12:30 - 2:50
- Pre-K student with an IEP requiring a full-day program:
 - Will attend both AM and PM sessions

K Schedule

- Students will follow the same AM/PM schedule that they have followed in the past.
- Classrooms will be sanitized in between sessions by custodial staff.
- Virtual instruction is problematic at this level.
- Virtual instruction will be provided on a case-by-case basis.

Grades 1 - 3 Schedule

- Special Education services drive scheduling at this level in normal circumstances, and will continue to do so.
- Most of school day will focus on ELA and Math.
- Social Studies and Science will take place mostly virtually.
- Students will receive at least one special per day.
- Students will remain in their homeroom for most specials.

Grades 1 - 3, sample schedule

Time	Monday	Tuesday	Wednesday	Thursday	Friday
8:50-9:50 am	ELA	ELA	ELA	ELA	ELA
9:50-10:00 am	Mask Break	Mask Break	Mask Break	Mask Break	Mask Break
10:00-10:30 am	Writing	Writing	Writing	Writing	Writing
10:35-11:05 am	PE	H	Music	Art	D&T
11:10-11:40 am	Library	Sci/SS	PE	Sci/SS	Si/SS
11:45 am-12:00 pm	Snack/Mask	Snack/Mask	Snack/Mask	Snack/Mask	Snack/Mask
12:10-12:55 pm	Math	Math	Math	Math	Math

Lafayette Avenue School Schedule

- The school will retain its 6-day rotational schedule.
- ELA and Math will comprise the majority of instructional time during the rotation.
- Students will receive one special each day.
- Health and Physical Education will take place mostly virtually.
- Choir and theatre will take place virtually.

Lafayette Avenue School, sample schedule

	A Day	B Day	C Day	D Day	E Day	F Day
8:50 am	Calm Cougars					
8:55 am	Homeroom - LAF Live					
9:00 am - 9:45 am	D&T	HPE	WL	SS	Art	Music
9:50 am - 10:35 am	Math	Math	SS	LMC	Math	ELA
10:40 am - 11:25 am	Math	Sci	Math	Math	SS	ELA
11:30 am - 12:15 pm	ELA	ELA	ELA	Sci	ELA	Math
12:20 pm - 1:05 pm	ELA	Character	ELA	ELA	ELA	Sci

Chatham Middle School Schedule

- Electives and academic support classes translate into the need to convene all class periods each day.
- Students will receive their full selection of courses.
- The final period of the school day will be “Class 5” so that CMS and CHS can continue to share staff without disruption to students.
- Music lessons will be virtual

Chatham Middle School School Schedule

Time	A Day	B Day	C Day	D Day
7:55 am - 8:35 am	Class 1	Class 1	Class 1	Class 1
8:38 am - 9:10 am	Class 2	Class 2	Class 2	Class 2
9:13 am - 9:45 am	Class 3	Class 3	Class 3	Class 3
9:48 am - 10:20 am	Class 4	Class 4	Class 4	Class 4
10:23 am - 10:55 am	Class 6	Class 6	Class 6	Class 6
10:58 am - 11:30 am	Class 7	Class 7	Class 7	Class 7
11:33 am - 12:05 pm	Class 8	Class 8	Class 8	Class 8
12:08 pm - 12:40 pm	Class 5	Class 5	Class 5	Class 5

Chatham High School Schedule

- School will maintain its rotating drop schedule.
- Students will receive their full selection of courses.

Chatham High School Schedule

Time	Group A	Group B	Group A	Group B	Group A	Group B	Group A	Group B
	Day 1	Day 1	Day 2	Day 2	Day 3	Day 3	Day 4	Day 4
7:40 am - 8:25 am	Period 1	Period 1	Period 2	Period 2	Period 3	Period 3	Period 4	Period 4
8:30 am - 9:15 am	Period 2	Period 2	Period 3	Period 3	Period 4	Period 4	Period 1	Period 1
9:20 am - 10:05 am	Period 3	Period 3	Period 4	Period 4	Period 1	Period 1	Period 2	Period 2
10:10 am - 10:55 am	Period 5	Period 5	Period 6	Period 6	Period 7	Period 7	Period 8	Period 8
11:00 am - 11:45 am	Period 6	Period 6	Period 7	Period 7	Period 8	Period 8	Period 5	Period 5
11:50 am - 12:35 pm	Period 7	Period 7	Period 8	Period 8	Period 5	Period 5	Period 6	Period 6

All Schools--Scheduling Components

- Student dismissal will take place 2 hours earlier than usual.
- One hour of “down time” will follow after dismissal for students to return home, eat lunch, etc.
- Teachers will schedule and/or assign additional virtual learning work for the rest of the day.
 - For example: Grades 1 -3:
 - 8:35 - 1:05 (school day)
 - 1:05 - 2:05 (down time)
 - 2:05 - 3:05 (additional virtual learning)
- Homework will continue to be assigned after the school day.
- *This is all subject to change and will evolve.

All Schools - Other Considerations

- No lunch will be served.
- Parents may order a “brown bag” lunch and have it delivered to their child’s classroom right before dismissal.
- Lunch will be provided to all students who qualify for it under the federal lunch assistance program
- Locker rooms will not be used.
 - Students must dress comfortably and wear comfortable shoes.
 - PE will involve walking, stretching, yoga, and other non-strenuous activity.

All Schools--Other Considerations

- Nurses Offices
 - Reconfiguration taking place as needed.
 - Isolation areas are being created in all schools.

CMS and CHS Scheduling Considerations

● Specials, Cycles, Electives

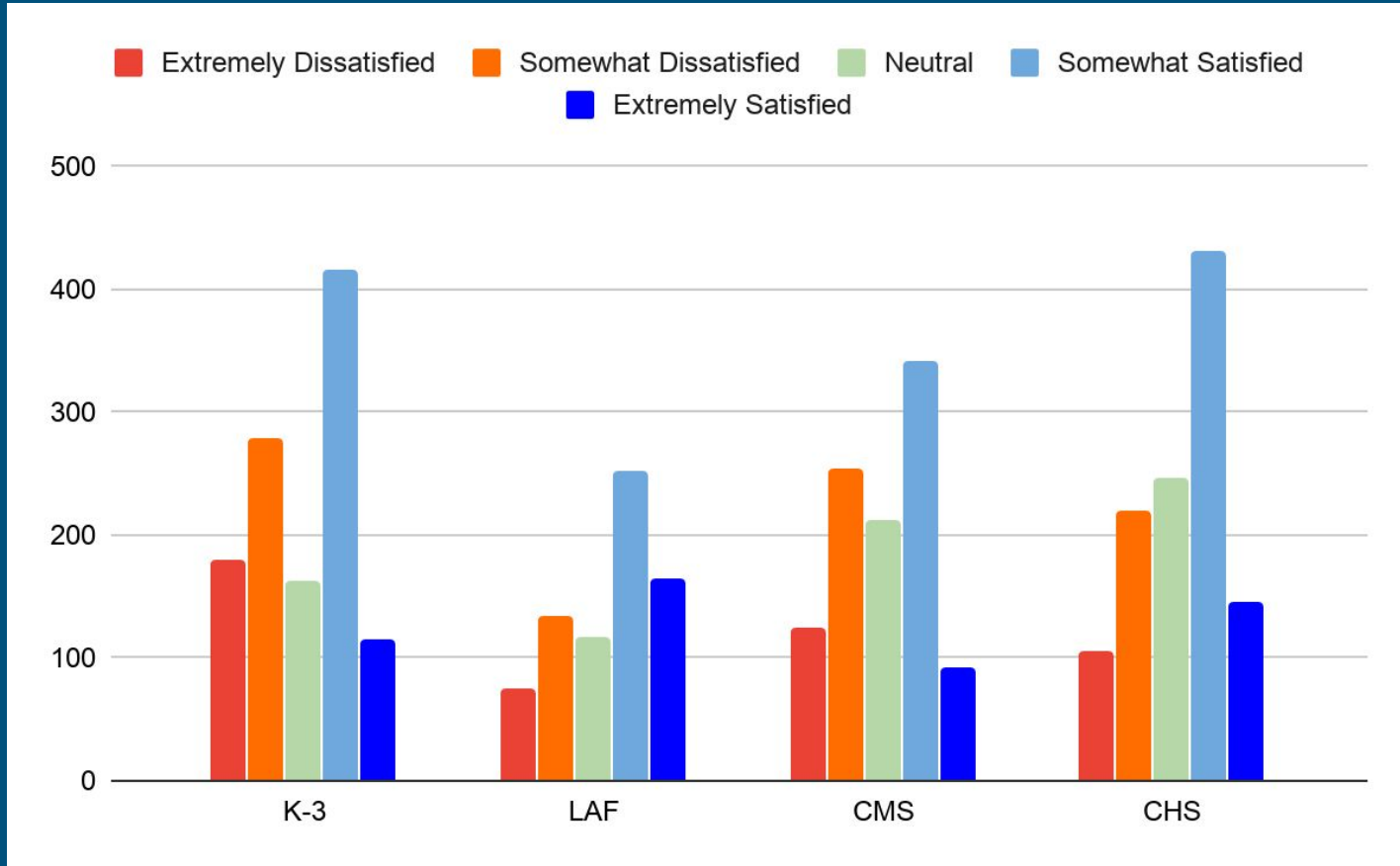
- May constitute the greatest area of interest for a child.
- Are designed at CMS to support and enable further advancement at CHS.
- Reducing instructional time in these areas at CMS may lead to an inability of a student to pursue upper levels of a subject area at CHS.
- Elimination at CHS leads to compression of schedule and inability for students to take the courses they want.
- Represent New Jersey high school graduation requirements.

Parent Surveys

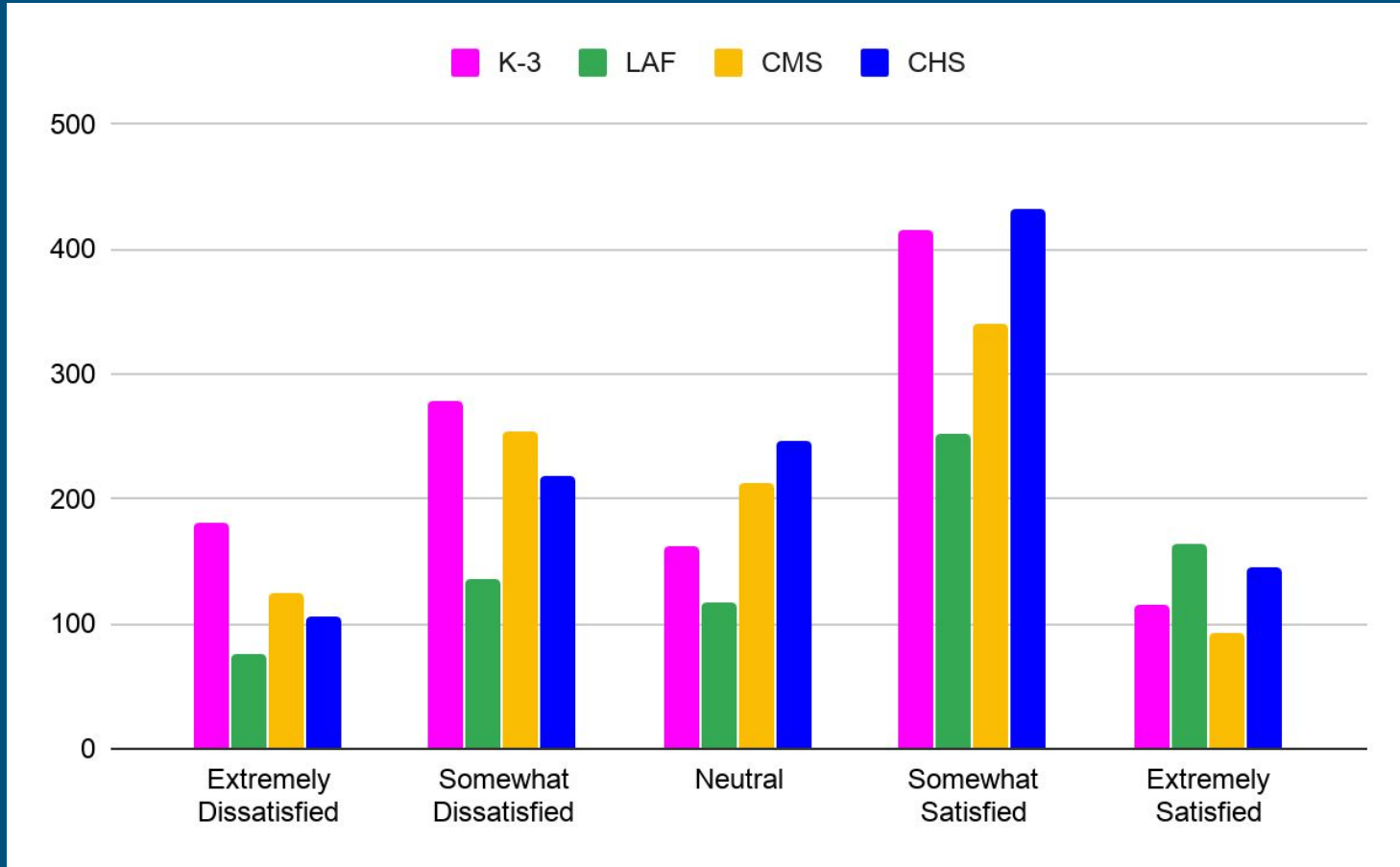
Two Surveys Administered this Summer

- Perceptions of Virtual Schooling this Spring
 - Completed for 4,022 students
 - Administered final week of June
- Intentions for School this Year
 - Completed for 3,715 students
 - Administered July 20 - 22

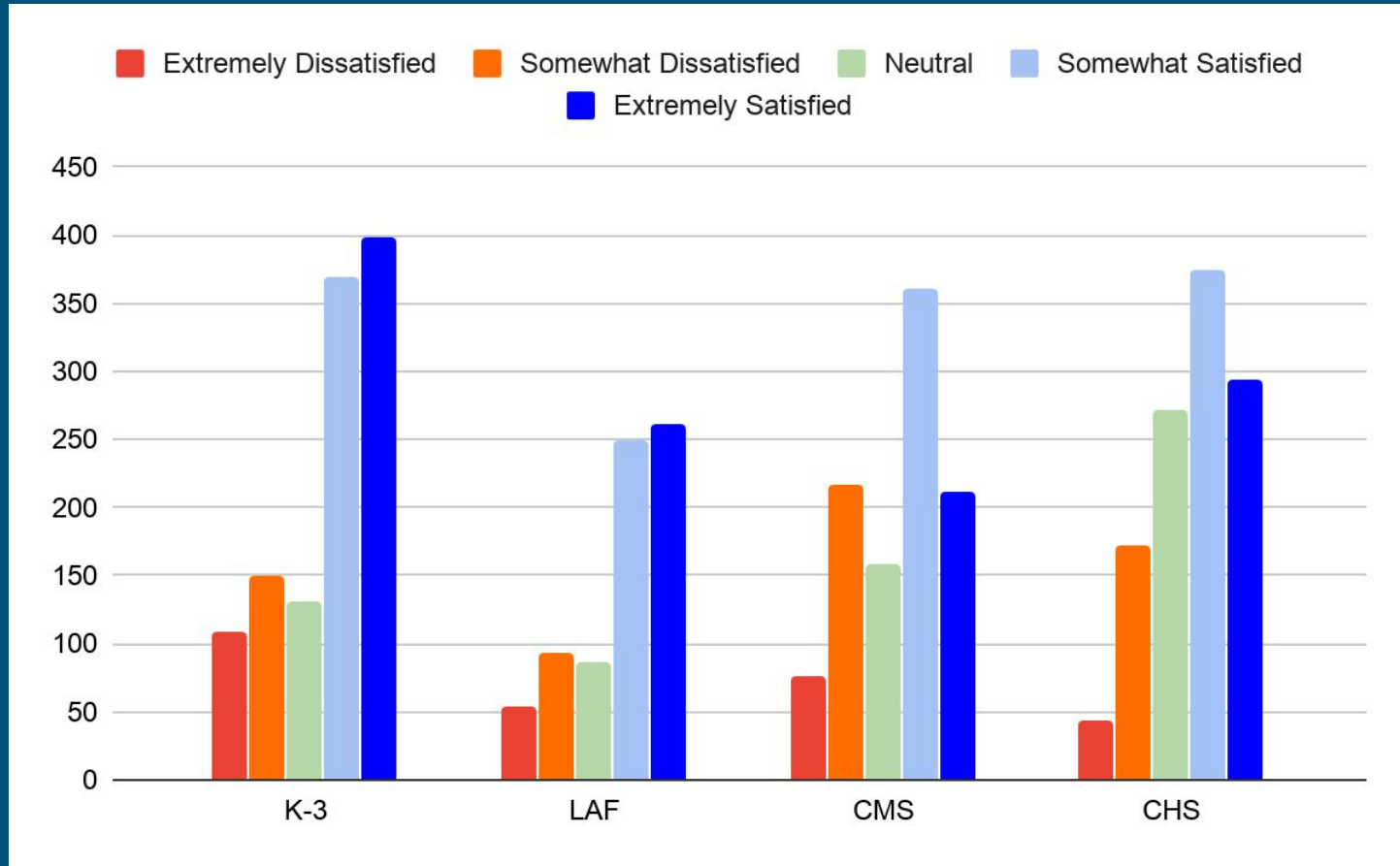
General Satisfaction with Virtual Learning



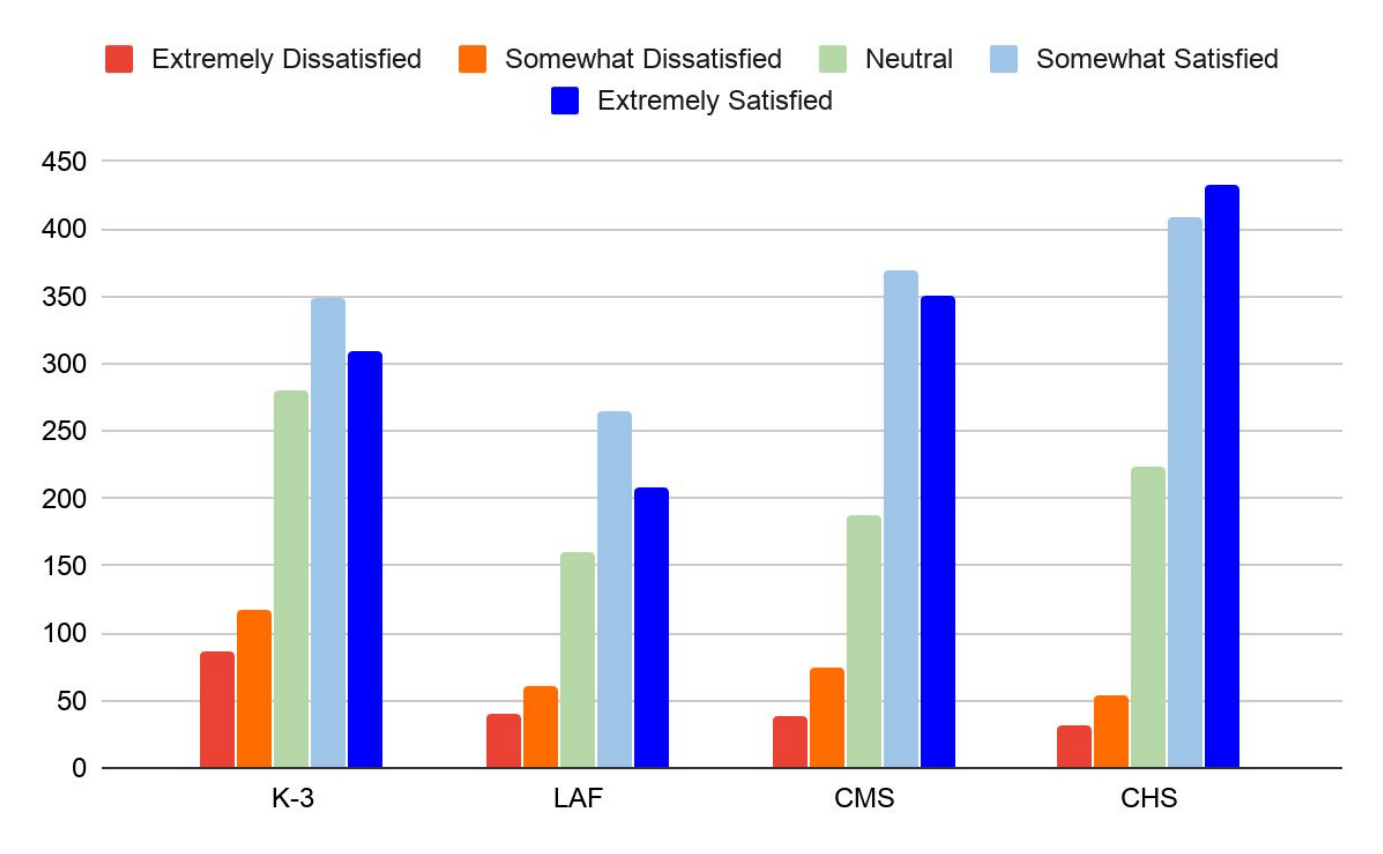
General Satisfaction with Virtual Learning



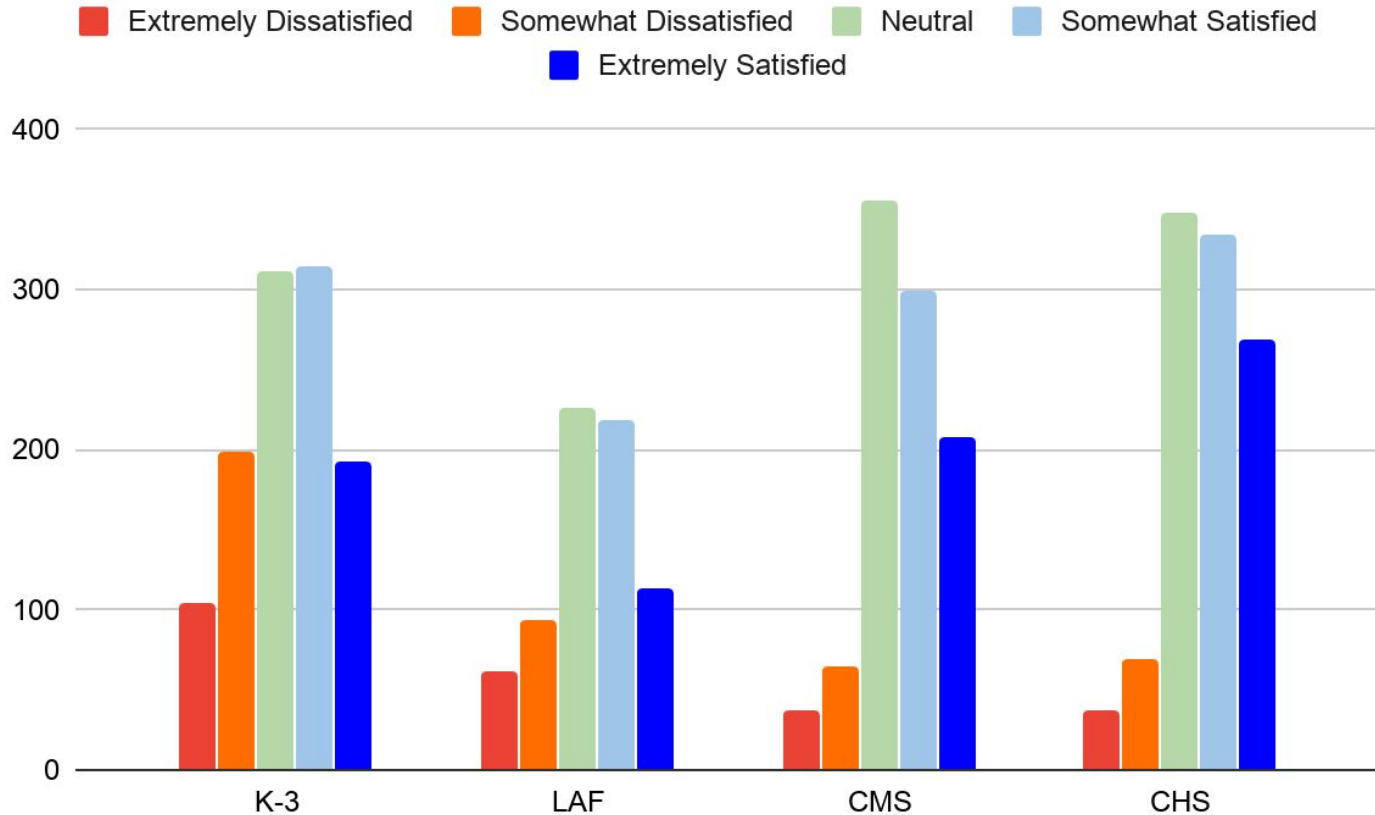
Satisfaction with Teacher Communication



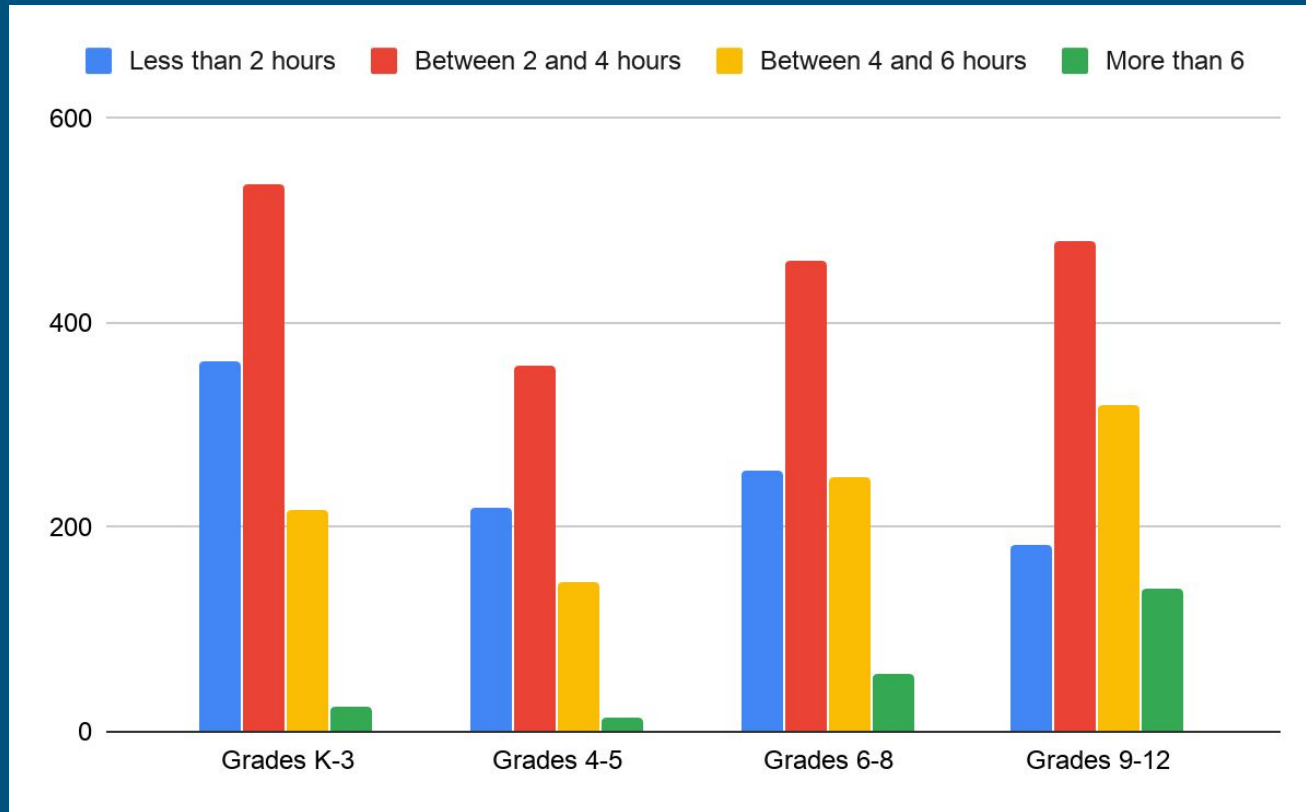
Satisfaction with Building Communication



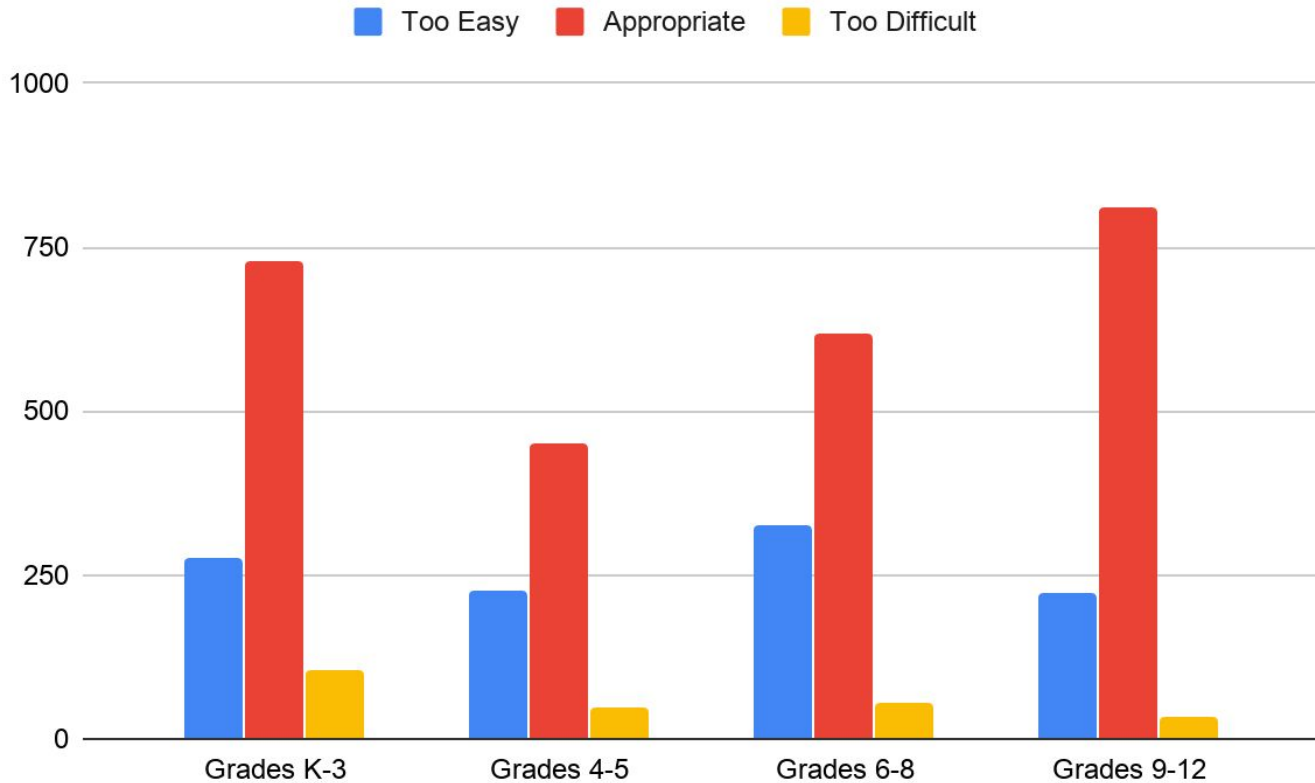
Satisfaction with Technology



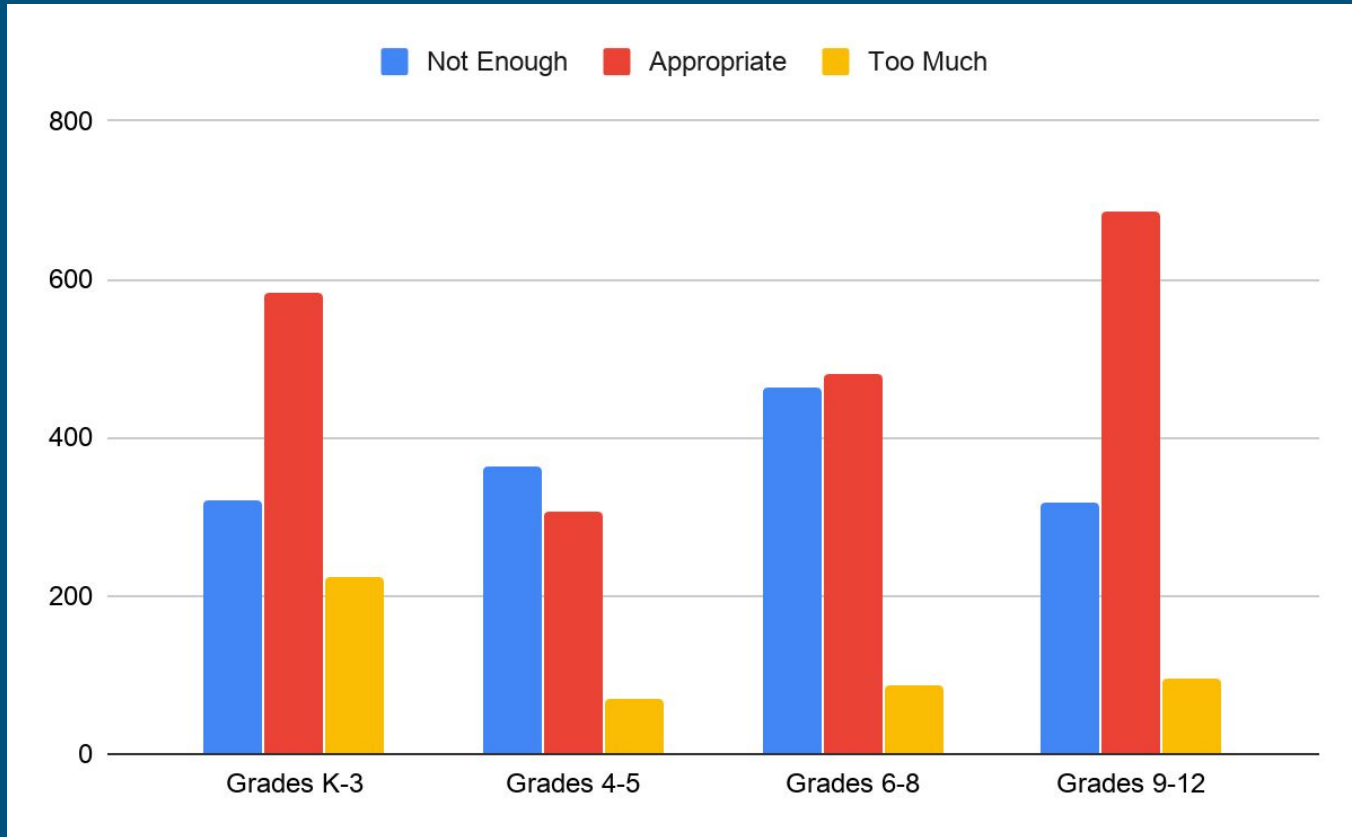
Daily Amount of Time Spent on Virtual Instruction



Difficulty Level of Workload



Quantity of Workload



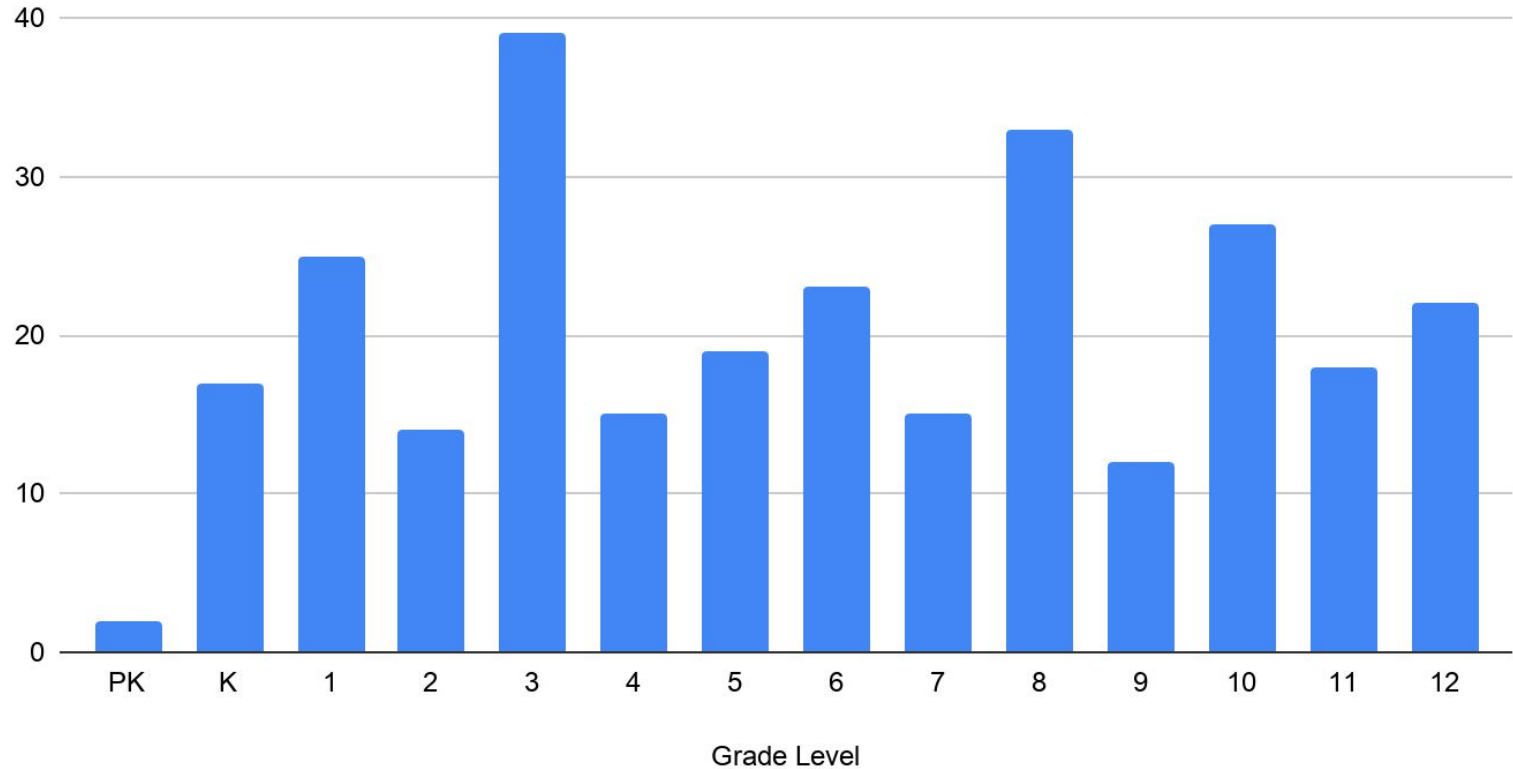
Daily or Weekly Rotation

- 76% preferred daily rotation (e.g. every other day)
- 24% preferred weekly rotation (e.g. every other week)

July Survey on Intent to Return

- 20.9% of parents would not send their child to school in Plan A.
- 68% of these parents WOULD send their child to school in Plan B.
 - 65% at PK-5 (198 total students)
 - 70% at 6-12 (316 total students)

August Selection for Virtual Instruction



Virtual Learning Framework

- Students who are at home—either because they selected to be on virtual instruction or because they are in Grades 6-12 and at home every other day—must log into the Google Meet that corresponds with their classroom or class period every day.
- Attendance will be taken via Google Meet.
- Students working virtually from home must be present in the Google Meet for the same period of time as students who are physically in school.

Virtual Learning Framework, continued

- The camera in the classroom will be directed toward the front board of the classroom and capture the teacher and front board.
- The teacher will stream the portions of the lesson that take place in the front of the room as she deems appropriate.
- Assessment practices for students on virtual instruction will vary according to the class and grade level, and may include:
 - Timed assessments.
 - Assessments that require a photograph (taken via cell phone) verifying student work.
 - Scheduled appointments in school after the school day ends to take assessments on a one-by-one basis.

Google Meet Upgrades

- Hand raising
- Polling
- Attendance
- Small group breakouts
- Moderator controls

Upgrades to Help with Organization

- Little Sis
 - Organizational tool for Google Classroom to support teachers and parents

Virtual Instruction--Additional Changes

- Chromebooks will be distributed to students K-5.
- District has purchased additional software programs.
- District has purchased document cameras for use in certain departments.

Virtual Instruction -- Directions for Parents

- Parents who would like to opt their children into virtual-only instruction must:
 - Complete a form indicating their selection for virtual instruction.
 - Commit to having their child remain in virtual instruction for at least 30 days.
 - Provide 30 days notice to the school district should they elect to switch their child back into in-person instruction.

Expectations for Parents

- Parents may not appear in a Google Meet with their child.
- Parents may not interfere in a virtual lesson.
- Parents may not record a Google Meet.

Social and Emotional Wellbeing

- Counselors are working to provide additional supports to students and staff.
- Our website will be updated with additional resources for students and parents.
- Our teaching staff will gradually reintroduce students to the school environment and focus on social integration over academics during the initial weeks of school.

If Schools Must Transition to Plan C (full virtual instruction)

- If Governor Murphy announces that schools will not reopen in September, each school will implement a full virtual schedule. (see following slides)
- If Governor Murphy or the Department of Health announces a school closure after the year has begun, the current school schedules will remain in effect virtually for one week so that students and staff have consistency before transitioning to the full virtual schedule.

Virtual Schedules at All Schools

- Set schedule will be in place.
- Attendance will be taken via Google Meet.
- Wednesday will be a flex day dedicated to Office Hours / Google Meets with teachers and paraprofessionals.

Virtual Schedule: 1-3 Sample

Time	Subject	Activity
8:50 am - 9:05 am	Morning Meeting	Check-In/Introduce Day's Objectives
9:05 am - 9:15 am	ELA - Reading	Pre-Recorded Mini-Lesson
9:15 am - 9:45 am	ELA - Reading	Strategy Groups
9:45 am - 10:05 am	ELA - Word Study	Word Work
10:15 am -10:45 am	ELA - Writing	Strategy Groups
10:45 am - 11:15 am	Special	Lessons with Specialist
11:15 am - 11:25 am	Math	Pre-Recorded Mini-Lesson
11:25 am - 11: 55 am	Math	Strategy Groups
11:55 am - 12:25 pm	Science	Work Varies by Lesson
12:25 am - 12:55 pm	Social Studies	Work Varies by Lesson

Virtual Schedule: LAF Sample

Time	Monday - Tuesday	Wednesday	Thursday - Friday
8:45 am	Morning Meetings - Check Ins	Flex Day	Morning Meetings - Check Ins
9:00 am	ELA: Virtual Lessons (Live / Recorded)	Meets w/Teachers	Math: Virtual Lessons (Live / Recorded)
9:20 am	ELA: Independent / Small Group Meets		Math: Independent / Small Group Meets
10:30 am	Break	SEL Lessons	Break
11:00 am	Special		ELA: Virtual Lessons
11:20 am	Math: Independent / Small Group Meets	Related Arts	ELA: Independent / Small Group Meets
12:30 pm	Lunch Break		Lunch Break
1:15 pm	Science		Social Studies
2:00 pm	Day Ends		Day Ends

Full Virtual Schedule: CMS

Time	A / C Day	Flex Day	B / D Day
	(Mon. / Thurs.)	(Wed.)	(Tues. / Fri.)
9:00 am - 9:45 am	Class 1	Office Hours / Meets with Teachers, scheduled by department	Class 5
10:00 am - 10:45 am	Class 2		Class 6
11:00 am - 11:45 am	Class 3		Class 7
12:00 pm - 12:45 pm	Class 4		Class 8
12:45 pm - 2:30 pm	Independent Work / Check-ins for classes not meeting that day.		

Full Virtual Schedule: CHS

Time	A Day	B Day	Flex Day	A Day	B Day
	(Mon)	(Tues.)	(Wed.)	(Thurs.)	(Fri.)
9:00 am - 9:55 am	Period 1	Period 5	Office Hours / Meets with Teachers, scheduled by department	Period 1	Period 5
10:00 am - 10:55 am	Period 2	Period 6		Period 2	Period 6
11:00 am - 11:55 am	Period 3	Period 7		Period 3	Period 7
12:30 pm - 1:25 pm	Period 4	Period 8		Period 4	Period 8
1:30 pm - 2:35 pm	Independent Work / Check-ins for classes not meeting that day.				

Phases for Returning to School

- Phase One
 - K-5 students return under Plan A
 - 6-12 students return under Plan B
- Throughout Phase One, the district will remain in contact with the local departments of health and monitor the health and wellbeing of students and staff.
- By October 15 (roughly 30 school days into the year) a determination will be made as to whether the school district should remain in Phase One or proceed to Phase Two

Phases for Reopening School

- Phase Two, in consultation with the local departments of health, may include:
 - Plan A for all students.
 - The daily schedule of Plan A, but with a full day of school when students are in school.
 - Other modifications based on the circumstances at that time.

Methods for Determining Phases

- Neither the CDC nor NJDOH has set specific standards or metrics relative to number of positive cases, transmission rate, positivity rate, etc., that clearly delineate the points at which a school district should close, open fully, etc.
- Both the CDC and NJDOH have stated that all determinations about school must be made in consultation with local departments of health and take into account the levels of virus transmission in a community and other factors.

What Happens If a Student Tests Positive?

- According to the local departments of health, determinations about what occurs if a student or staff member tests positive for Covid-19 will be made on a case-by-case basis.
- The Department of Health defines a close contact as someone who has spent more than 10 minutes within 6 feet of an infected individual.
- The school district will follow the direction of the local departments of health if or when a student or staff member tests positive for Covid-19.

What Happens if a Staff Member is Absent?

- The district will make every effort to procure substitutes.
- The teacher of record will leave plans for both the students in school in person and the students at home on virtual instruction.
- These plans may differ, and students at home may not have access to the live stream when a substitute is in the classroom.

Childcare for Parents

- The Work-Family Connection will provide:
 - Before care as in the past.
 - After care as in the past after dismissal of students.
 - Full-day care DURING the school day for CMS students on Plan B
 - To be held at LAF
 - Full-day care DURING the school day if Governor Murphy orders schools closed and all schools are on a Plan C schedule
 - Additional info to follow

Parent Activities: In Effect When Year Begins

- All parent meetings will be conducted virtually.
- Visitors will not be permitted to enter school buildings.
- Back-to-School Nights will be virtual (details TBD).
- Individual student photos will be taken, but no class photos.
- No large gatherings will be permitted inside the schools.

Remaining Challenges As of Today

- **Staffing**
 - Teachers
 - Paraprofessionals
 - Substitutes

- **Obtainment of equipment and PPE**
 - Face shields
 - Desk shields
 - Chromebooks

Upcoming Dates

- August 17: Parent Portal Opens; Updates to Website
- August 17 - August 20: Bus Routes Available
- August 24: Final Adjustments and Next Board Meeting
- August 31: First Day of School
- Ongoing / October 15: Evaluation of Current Plans

Thank you

